

WARM MELT SUPPLY SYSTEMS

For warm melt materials and temperature conditioning applications



PROFESSIONAL EXTRUSION WARM MELT SUPPLY SYSTEMS

WARM MELT extrusion systems, with reliable performance for all applications that require a constant monitoring of product heating to preserve its chemical characteristics.

- Max. operating temperature 90 °C
- Max. delivery 12 l/min
- Direct suction from 30 l - 200 l drums
- Quick container change over
- No overheated material
- Less product waste
- Easy to integrate in all manufacturing lines
- Long and reliable product life
- User friendly
- Easy maintenance

HIGH PERFORMANCE EXTRUSION WARM MELT SUPPLY SYSTEM

Designed to maximize plant's production capacity in applications that require a temperature control.

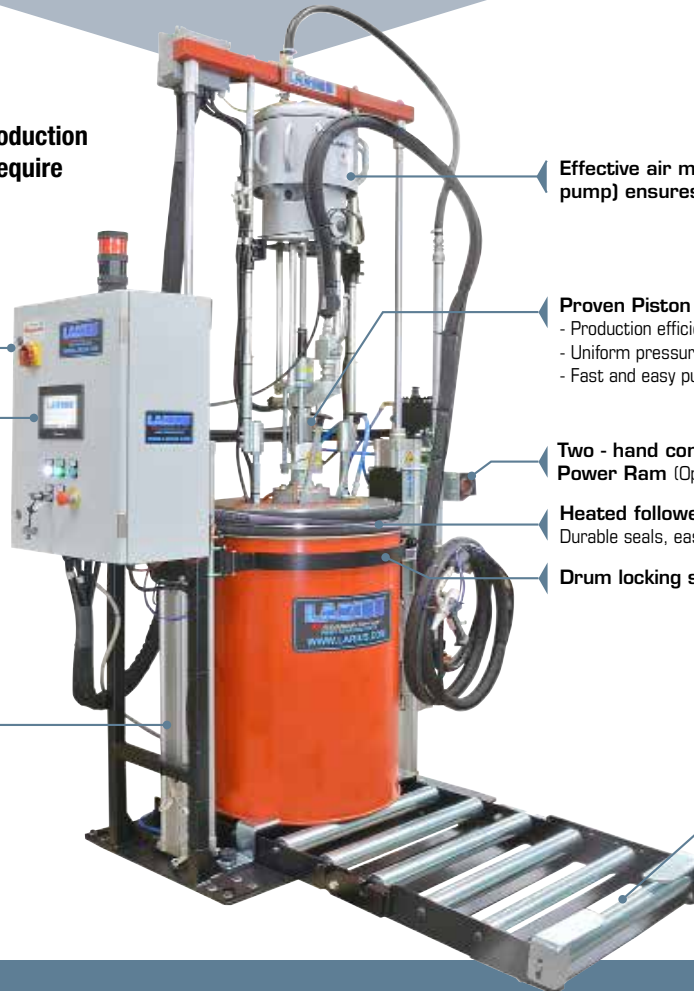
Electrical panel

System control unit with touch screen and power supply

- Simple and intuitive configuration, monitoring and diagnostic.
- Flexible and personalized configuration.
- Total control of the current temperature in °C
- Alarm management.
- Five users with password protection.

Double acting pneumatic cylinders

- Quick and efficient priming of high viscosity products.
- Magnetic sensors detects pump position and stops the pump when the drum is empty.



Effective air motor diameter 10" (NOVA pump) ensures maximum pump power

Proven Piston Pump Technology:
- Production efficiency and precise material handling.
- Uniform pressure delivery, with no fluctuation.
- Fast and easy pump maintenance.

Two - hand control for pneumatic Power Ram (Optional)

Heated follower plate
Durable seals, easy to replace.

Drum locking system

Roller for a correct drum positioning (Optional)

MATERIALS

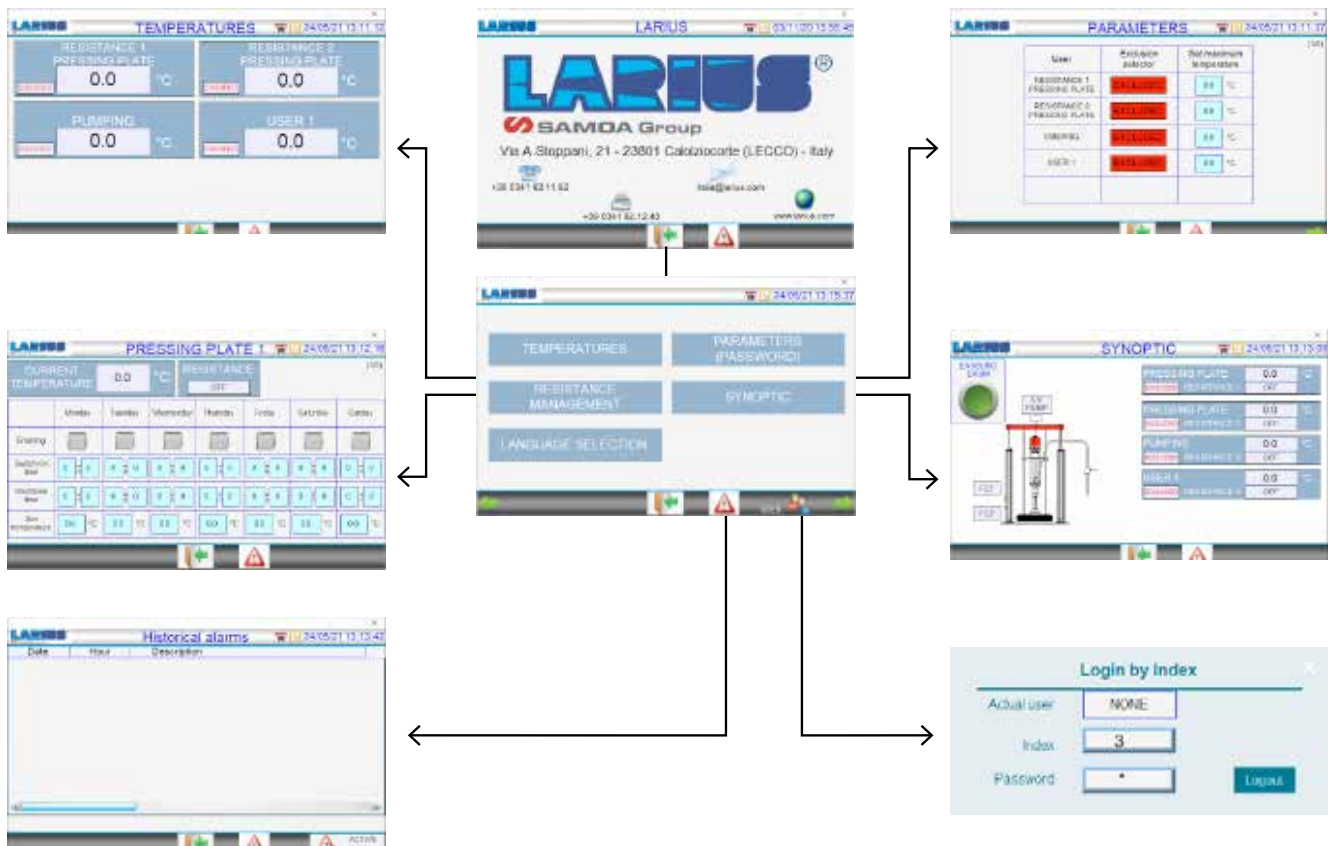
- ADHESIVES
- SILICONES
- SEALANTS
- GLUES
- EPOXIES
- PREPREG RESIN MIXES
- PARAFFIN
- HIGH SOLID MATERIALS

TEMPERATURE CONDITIONING APPLICATIONS

- AUTOMOTIVE AND AEROSPACE ASSEMBLY
- WINDOW AND DOORS MANUFACTURING
- INSULATED GLASS SUPPLY
- CABLE MANUFACTURING
- HOME AND COMMERCIAL APPLIANCE ASSEMBLY
- FURNITURE ASSEMBLY
- TAPE AND LABEL MANUFACTURING
- SOLAR PANELS CONSTRUCTION
- ELECTRONIC MANUFACTURING
- ADVANCED COMPOSITES
- AND MORE ...

TOUCH SCREEN PANEL

Temperature management improves the efficiency of high viscosity products processing.



TECHNICAL DATA

MODELS	GHIBLI 26:1	OMEGA 28:1	OMEGA 40:1	NOVA 55:1
Air inlet	1/2" BSPP (F)	3/4" BSPP (M)		
Max. pressure air inlet	3 - 8 bar 40 - 120 psi			3 - 7 bar 40 - 100 psi
Fluid outlet	1/2" BSPP (M)	1" BSPP (F)		
Max. fluid working pressure	208 bar 3.120 psi	224 bar 3.249 psi	320 bar 4.641 psi	380 bar 5.511 psi
Lower pump material	Carbon steel			
Plunger material	Stainless steel 420B			
Seals materials	PTFE + PE 1000			
Air motor diameter	Ø 4 1/4" - 110 mm	Ø 7" - 180 mm	Ø 7" - 180 mm	Ø 10" - 250 mm
Piston stroke	Ø 4" - 100 mm	4 3/4" - 120 mm		
Max. operating temperature Pump - Follower plate	90 °C			
Max. operating temperature Hoses - Valves - Regulators	90 °C			
Max. power input (V)	4 Kw			
Delivery cycle	60 cc	200 cc	125 cc	200 cc
Delivery at 60 cycles per minute	3,6 l/min	12 l/min	7,5 l/min	12 l/min
Air motor sound	< 90 Db (A)			
Max. dimensions	1.500 x 1.500 x 3.000 (Max. high)			
Drum model	30 l - 200 l			
Follower plate	Double gasket Heating			
Seals material	EPDM			
Weight	420 kg	441 Kg	444 kg	450 kg

ORDERING INFORMATION

Extrusion warm melt supply systems are available with different configurations.

To choose the best system configuration it is important to consider:

- Extrusion nozzles sizes
- Control valves pressure and volume compatibility and their type (manual, automatic, robotic, jet)
- Material hoses pressure, volume and chemical compatibility
- Pump compatibility with the pumped product

WARM - MELT SYSTEMS CODING

Example: NOVA 55:1 warm melt system - Drum weight 200 kg - Two hand control - Roller

W - AA - BBB - C - D = W552002R

W	AA	BBB	C	D
WARM - MELT	RATIO	DRUM KG	ONE OR TWO HAND CONTROL	ROLLER
	26 GHIBLI 26:1 60 cc	200 - 200 kg	1 One hand control	0 Without roller
	28 OMEGA 28:1 200 cc	30A - 30 kg Double hose Ø 280 mm	2 Two hands control	R Roller included
	40 OMEGA 40:1 125 cc	30B - 30 kg Single lip		
	55 NOVA 55:1 200 cc			

ACCESSORIES

PART No.	DESCRIPTION
200121	Ram and pump air pressure booster + tank 24 l. Operative pressure 2 - 12 bar
200125	Ram air pressure booster. Operative pressure 2 - 12 bar
200124	Warm melt extrusion gun (Part No. 15027 included)
15027	Articulated swivel 3/8" - 6 mm - 250 bar for extrusion gun
200105	Nozzle for warm melt applications. Gasket in contact with material in Nylon
20122	Ram 200 l palletized transport kit

HIGH PRESSURE HEATED HOSES - 90 °C

PART No.	DESCRIPTION	MAX. OPERATIVE PRESSURE
WHA25051	1,5 m - 1/4" BSPP (F) - 1/4" BSPP (F)	310 bar
WHA25151	5 m - 1/4" BSPP (F) - 1/4" BSPP (F)	310 bar
WHA25251	7,5 m - 1/4" BSPP (F) - 1/4" BSPP (F)	310 bar
WHA38051	1,5 m - 3/8" BSPP (F) - 3/8" BSPP (F)	240 bar
WHA38151	5 m - 3/8" BSPP (F) - 3/8" BSPP (F)	240 bar
WHA38251	7,5 m - 3/8" BSPP (F) - 3/8" BSPP (F)	240 bar
WHA50051	1,5 m - 1/2" BSPP (F) - 1/2" BSPP (F)	345 bar
WHA50151	5 m - 1/2" BSPP (F) - 1/2" BSPP (F)	345 bar
WHA50251	7,5 m - 1/2" BSPP (F) - 1/2" BSPP (F)	345 bar



HEATED HOSES TEMPERATURE CONTROLLERS

PART No.	DESCRIPTION
WTC40I	Integrated controller IP40
WTC40E	External controller IP40
WTC65E	External controller IP65
WTC65E-3	External controller IP65 - 3 users

NB: Order the temperature controller with its heated hose.

LARIUS®
SAMOA Group

LARIUS S.r.l.
VIA ANTONIO STOPPANI, 21
23801 CALOLZIOCORTE (LC) ITALY
Tel.: +39 0341 621152 - Fax: + 39 0341 621242
export@larius.com
www.larius.com

MADE IN ITALY SINCE 1969

